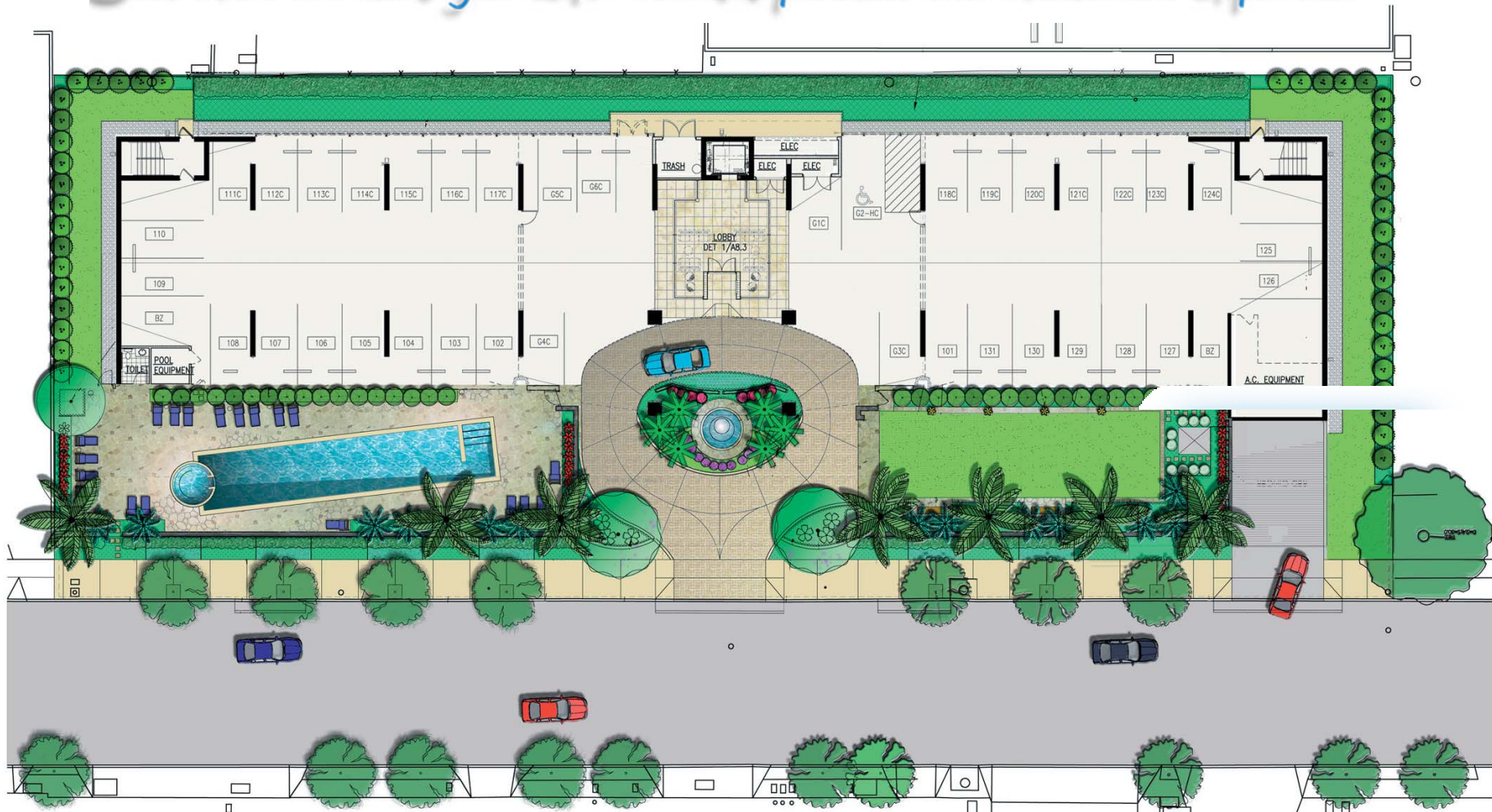


Jim More will make your Loft@Waikiki purchase ...a Memorable Experience



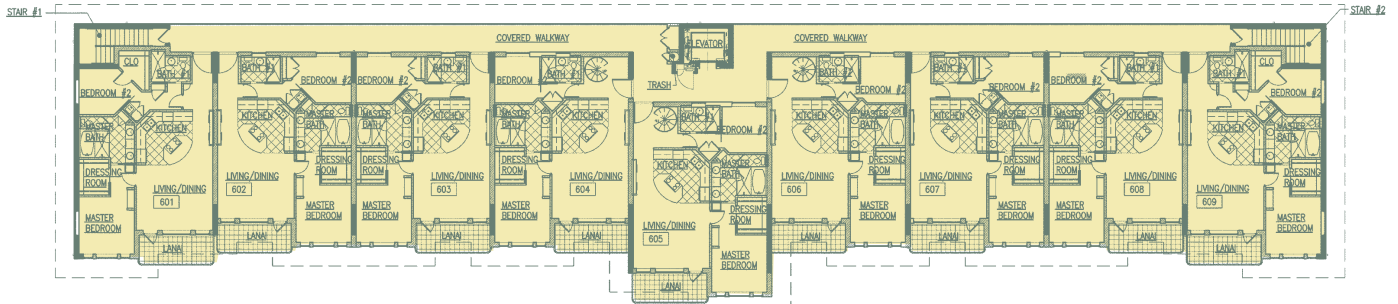
Landscape & Garage Floor Plans

Situated on a quiet tree-lined street in the heart of Waikiki, LOFT@WAIKIKI features a classic architecture style that is appropriate to the neighborhood scale. In addition, the building offers many amenities, including a 65-foot lap pool, sundeck and spa as well as landscaped gardens, private secured parking and state-of-the-art lobby with full surveillance.

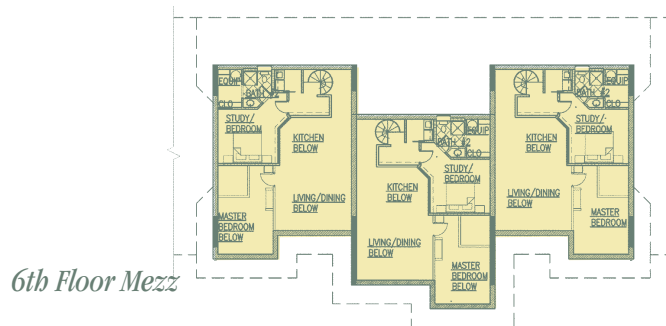


The most current Inventory and Prices

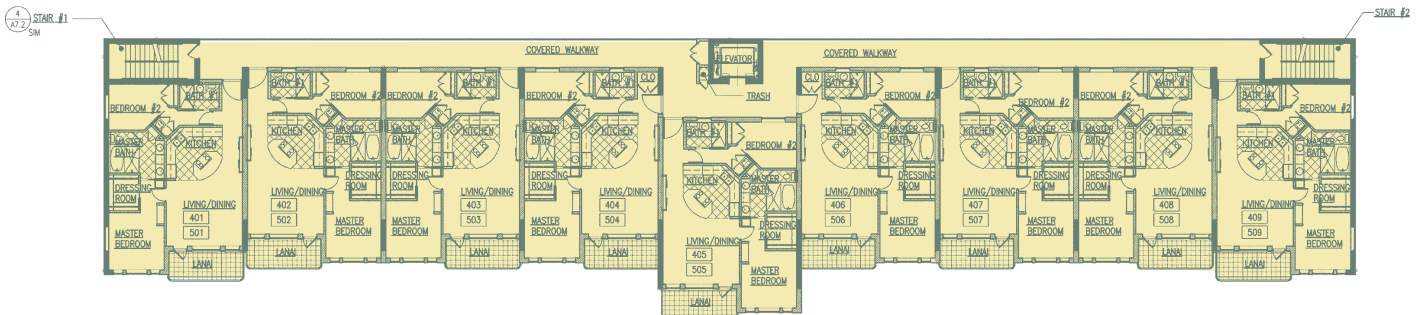
Floors 3-6



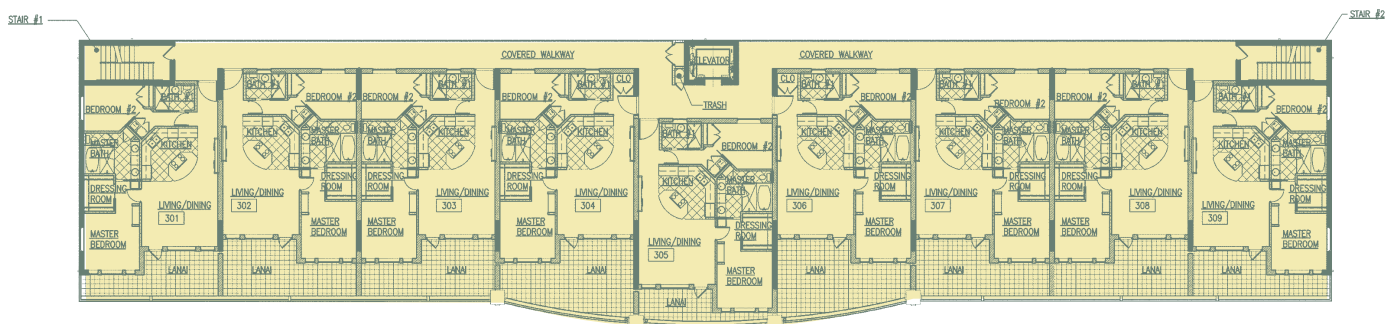
6th Floor



6th Floor Mezz



4-5th Floor



3rd Floor

Standard Floor Plan

All Standard Floor Plans have 2 Bedrooms, 2 Bathrooms, and 2 over-sized parking stalls. The standard units are from 1,047 to 1,100 sf. and are finished with the highest quality interiors, appliances, and architectural details to complement the 12-, 15-, and 19-ft. ceiling loft design.

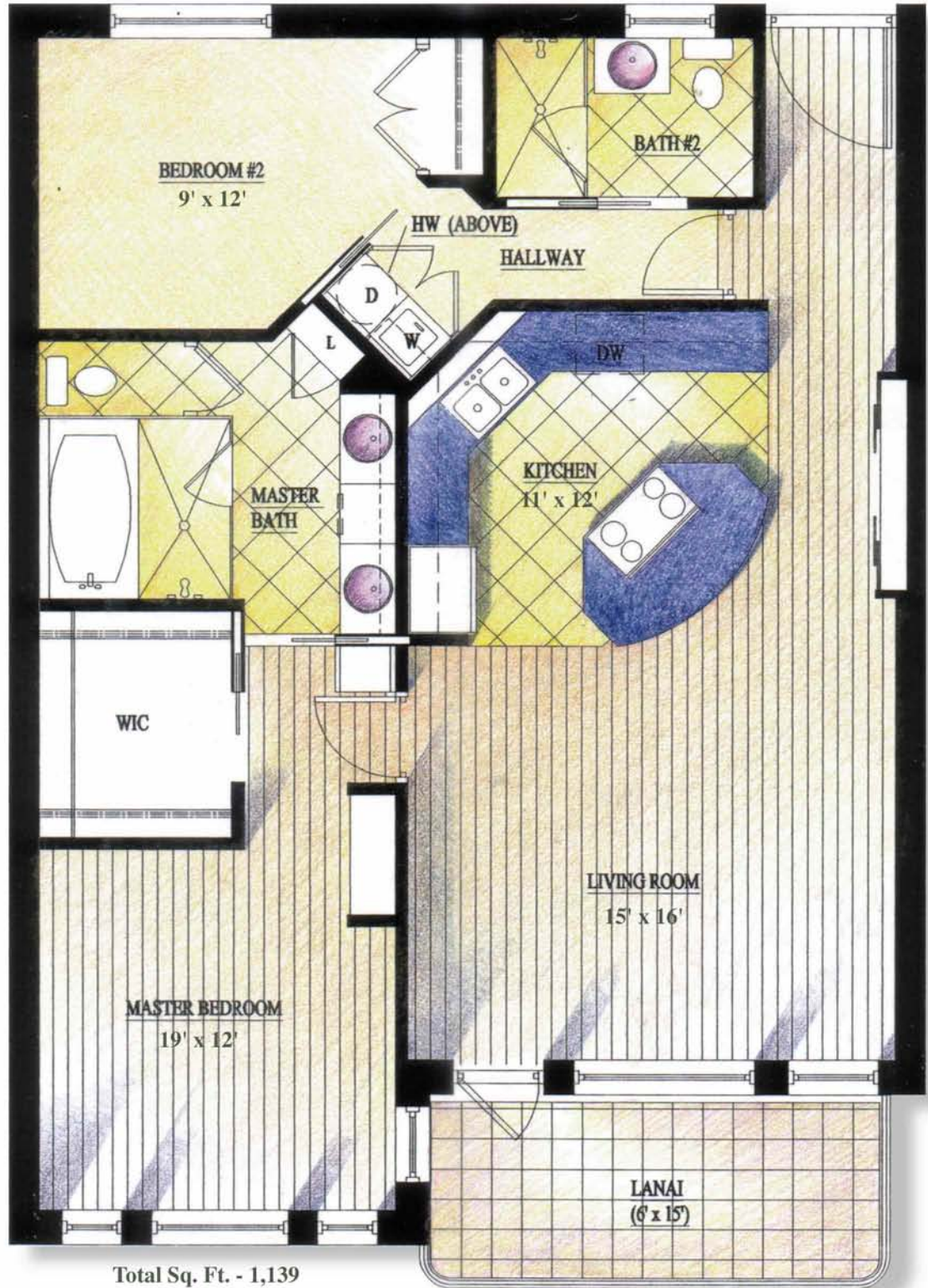
Total Sq. Ft. - 1,139

Living Room - 15' x 16'

Master Bedroom - 19' x 12'

Kitchen - 11' x 12'

Bedroom #2 - 9' x 12'



Unit Wall Options

Curve Wall

that allows more expansive living room while creating architectural design forms that are uncommonly found in condominium units.



Total Sq. Ft. - 1,139
Living Room - 15' x 17'
Master Bedroom - 19' x 11'
Kitchen - 11' x 12'
Bedroom #2 - 9' x 12'



Glass Wall

A floor to ceiling seamless glass system, provides maximum visual and light penetration from living room to the master bedroom with the lower glass being frosted to obscure direct viewing into the bedroom.



Total Sq. Ft. - 1,139
Living Room - 15' x 17'
Master Bedroom - 19' x 12'
Kitchen - 11' x 12'
Bedroom #2 - 9' x 12'



Combined Penthouse Units

2,330 Total Sq. Ft.

Offering double the living space, any of the 2 corner units on each floor can be combined with its neighboring unit to create the 3-bedroom, 3-bathroom floor plan. This floor plan offers greater design diversity with benefits; including four 11-foot arched windows and two glass-railed lanais.

Living Room/Dining Room - 23' x 31'

Master Bedroom - 26' x 14'

Kitchen - 12' x 27'

Bedroom #2 - 9' x 10'

Bedroom #3 - 19' x 10'



2,330 Total Sq. Ft.

Mezzanine Penthouse Units

1,539 Total Sq. Ft.

Units 604, 605, 606

Showcasing the 19-ft. high penthouse ceilings, LOFT@WAIKIKI features 3 mezzanine units, which offer 3-bedroom, 3-bathroom, on the penthouse level.

Living Room - 15' x 16'

Master Bedroom - 19' x 12'

Kitchen - 11' x 12'

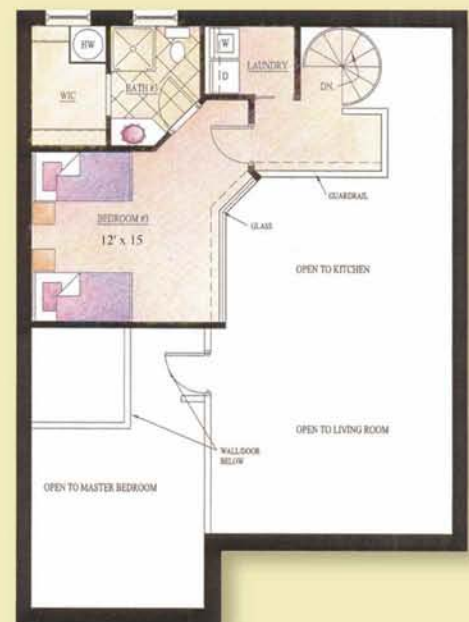
Bedroom #2 - 9' x 10'

Bedroom #3 - 12' x 15'



1,539 Total Sq. Ft.

Listing Courtesy:
Heyer & Associates
LLC



Perspective View 1



Perspective View 2



Perspective View 3

